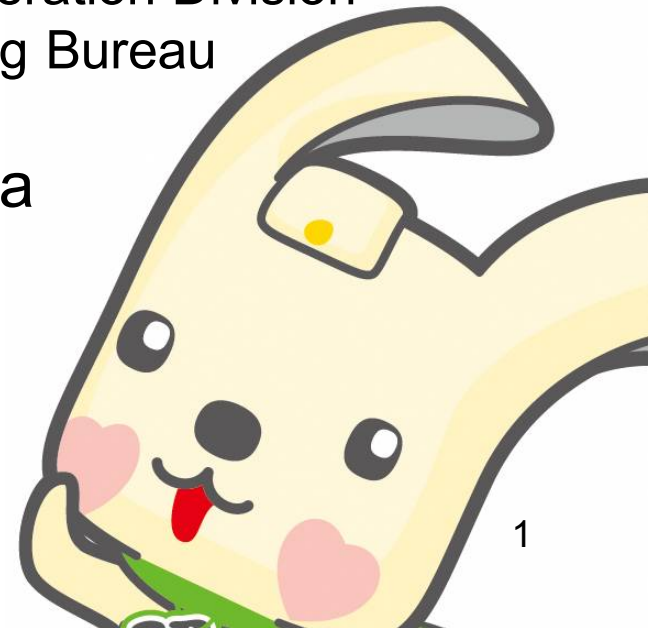




Recycling Small Home Electronics in the City of Yokohama

Manager of Recycling Section
Resources and Waste Collection Operation Division
Resources and Waste Recycling Bureau
City of Yokohama
Kazushi Matsushima



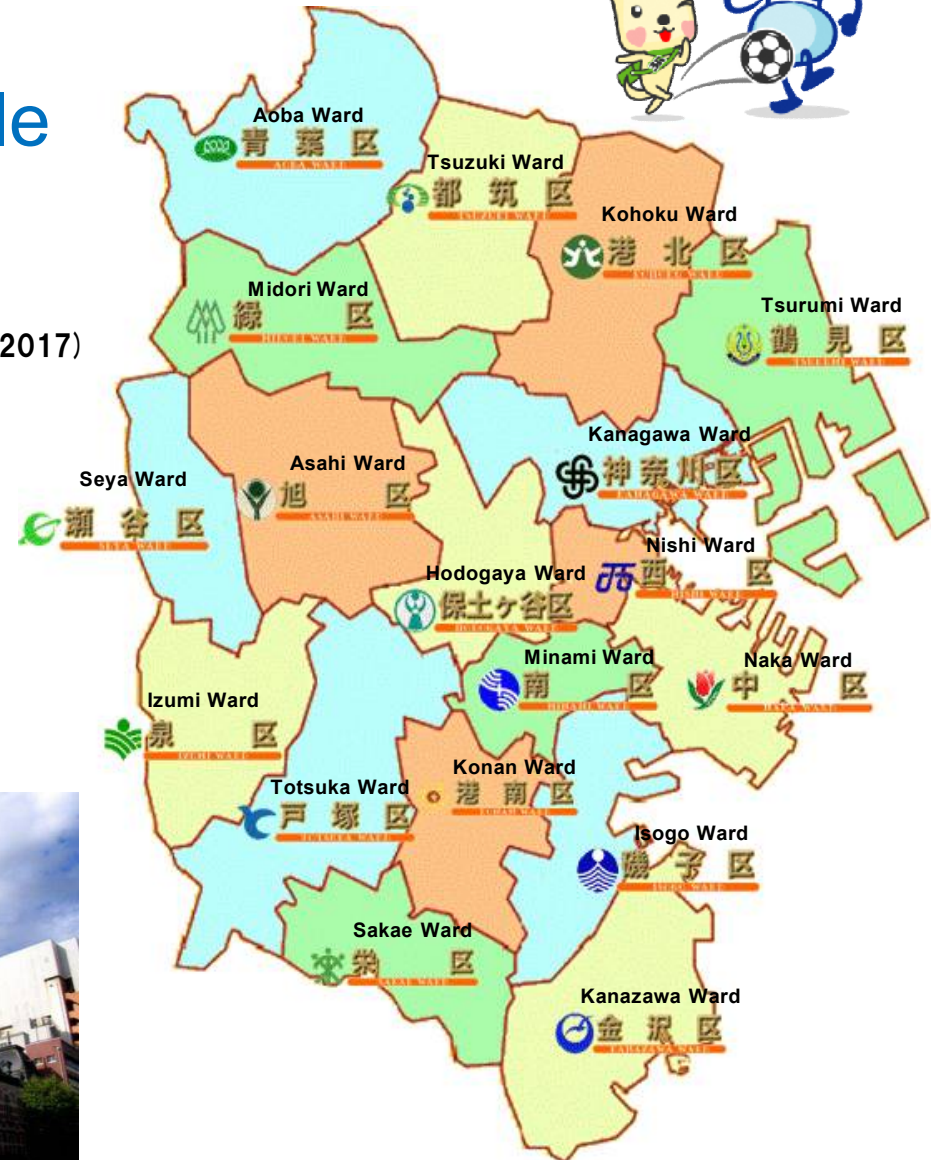


City of Yokohama Overview



Population: 3,730,000 people
in 1,670,000 households

- Cabinet-designated city with 18 wards
(As of August 1, 2017)





Small Home Electronics Recycling Act

- Official Name

Act on Promotion of Recycling of Small Waste Electrical and Electronic Equipment

- Effective Date

April 1, 2013

- Purpose

To extend the lifespan of waste disposal sites and ensure proper environmental management in addition to promoting the recycling and domestic circulation of small home electronics containing usable metals, such as rare and precious metals, which had, until recently, been discarded without recycling



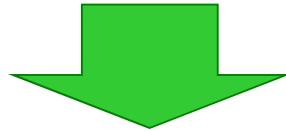
What is the role of municipalities?

Article 5 (Act on Promotion of Recycling of Small Waste Electrical and Electronic Equipment)

In addition to taking the necessary measures to separate and collect used small home electronic devices in the area, municipalities **shall endeavor** to deliver the used small electronic devices collected to persons certified under Article 10 Paragraph 3 or other persons who can properly recycle used small home electronic devices.

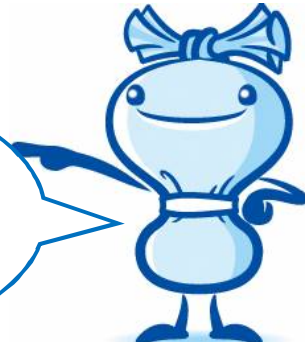
(Omitted)

3. The prefectures and municipalities **shall endeavor** to take necessary measures to promote the recycling of used small home electronic devices according to national policy.



- While the city should endeavor to collect small home electronic devices, this is not specified as a legal obligation, and **each municipality participates voluntarily** and specifies collection methods in accordance with the characteristics of the municipality.

Eligible Devices



Nearly all small electronics are subject to this law.

- Other than the **four home appliances** specified for recycling under the Home Appliance Recycling Act (**air conditioners, televisions, refrigerator/freezers, washer/dryers**), nearly all **small home electronics**, including accessories such as cables and chargers, are subject to this system.



Mobile phones, digital cameras, telephones, vacuum cleaners, rice cookers, electric fans, electric stoves, massagers, electronic instruments, game consoles, computers, etc.

- However, (1) items requiring special removal, such as **solar panels**, and (2) **fluorescent tubes and light bulbs**, which break easily and require special collection and transport, are not covered by this system.



The actual items to be collected will be decided by each municipality according to the characteristics and circumstances of the area.



Collection by the City of Yokohama

Collection of small home electronics started in October 2013 as a model project and was implemented in earnest after the completion of the project in April 2014.

Collection Methods

▪ Collection at Designated Locations

The city will install and collect small household electronic device collection boxes at 67 locations within the city (60 in government facilities such as ward offices, 7 at large supermarkets).

▪ Collection at Events

The city will install and collect special collection boxes at events held by the 18 wards, such as ward festivals.



Collection at Designated Locations



Kanazawa Ward Office



Naka Ward Office



Tsuzuki Ward Office





Ward Festivals

Install collection boxes, distribute leaflets and tissue packs containing advertisements to spread awareness and implement collection



Collection at Stores

In order to increase collection volume and make disposal more convenient for citizens, the city has started in-store collection at large supermarkets starting in March 2016 in addition to the designated locations at government offices.

Locations are currently expanding at a steady pace.

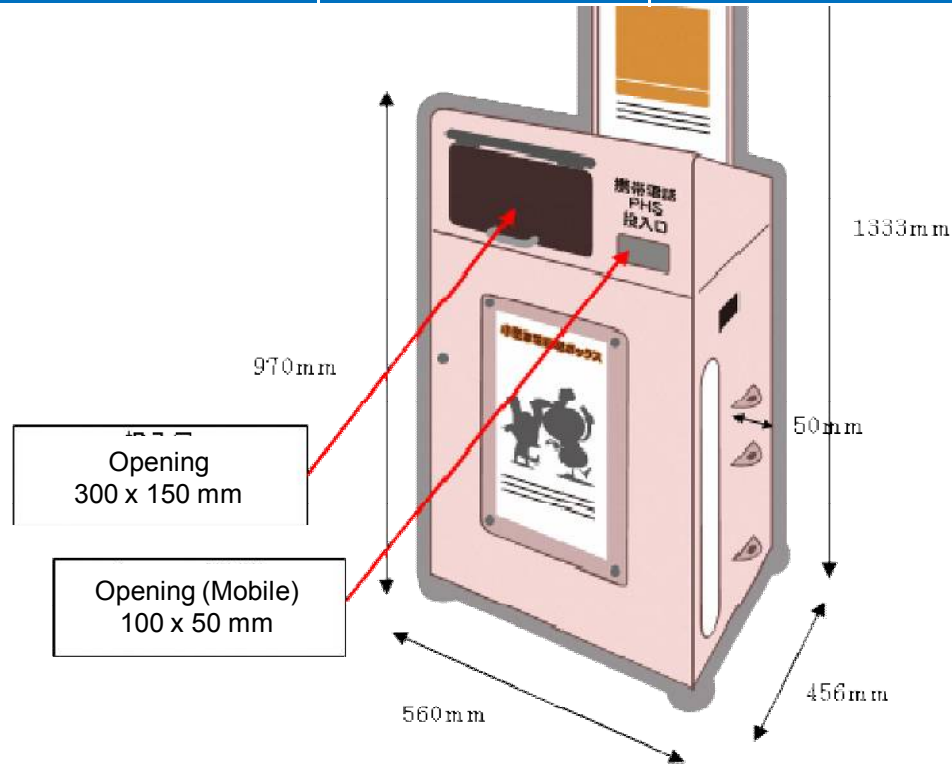
(As of August 29, 2017, seven locations* Four Aeon locations and three Ito Yokado locations)





Small Home Electronics Collection Box

Size (cm)	Size of Opening	Security Measures	Informational Items
56 cm width x 46 cm depth x 97 cm height	Large 30 cm × 15 cm Small 10 cm × 5 cm	Installation in locations within eyesight, lock on the door of the box, cover and slider on the opening	Door signs, overhead signs, banners



Banners

Q30 のその先へ
ヨコハマ3R夢!

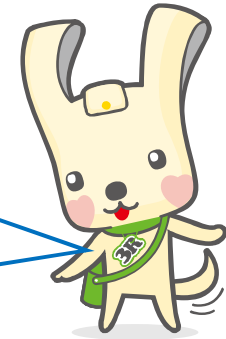
小型家電製品を
回収しています!



Eligible Devices

(Eligible for Collection by the City of Yokohama)

The City of Yokohama will collect items containing valuable resources.



- Used small home electronics stipulated in the Small Home Electronics Recycling Act that are less than 30 cm in length so that they fit into the collection box opening (30 cm x 15 cm)

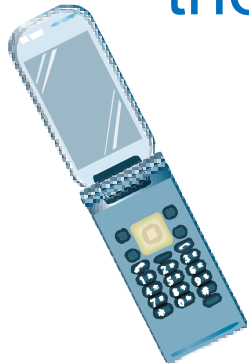




Examples of Eligible Items

(Eligible for Collection by the City of Yokohama)

Please remove any batteries. Put devices in together with any cords and adapters.

A small, blue, cartoonish character with a bow on its head, pointing towards the speech bubble.

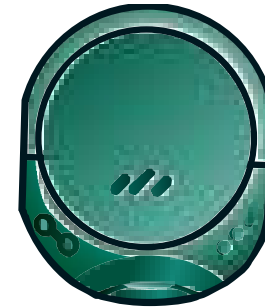
Mobile phone



Game consoles



USB memory



Portable music player



Telephone



Digital camera

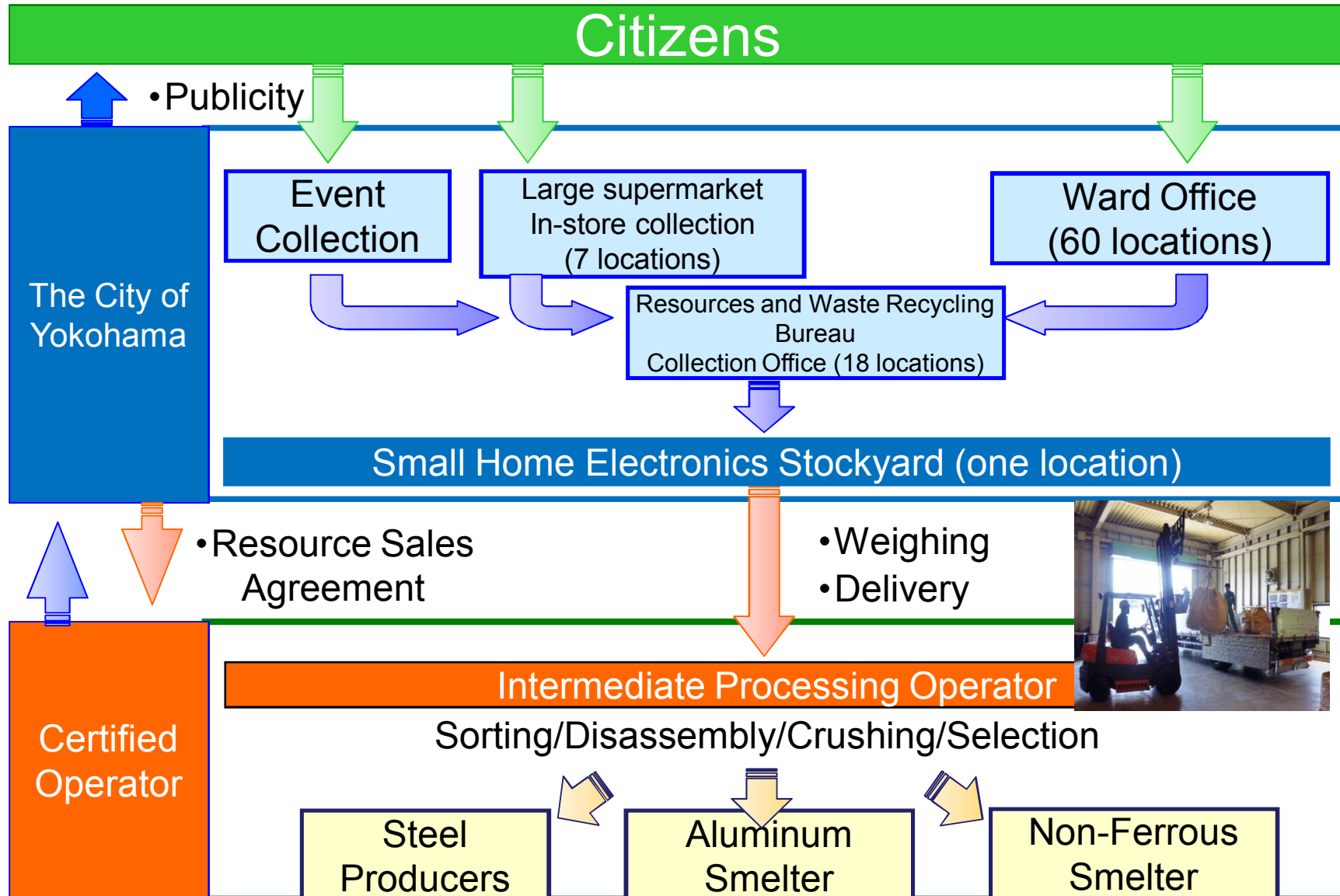


Electric razor



Computer

Collection Scheme





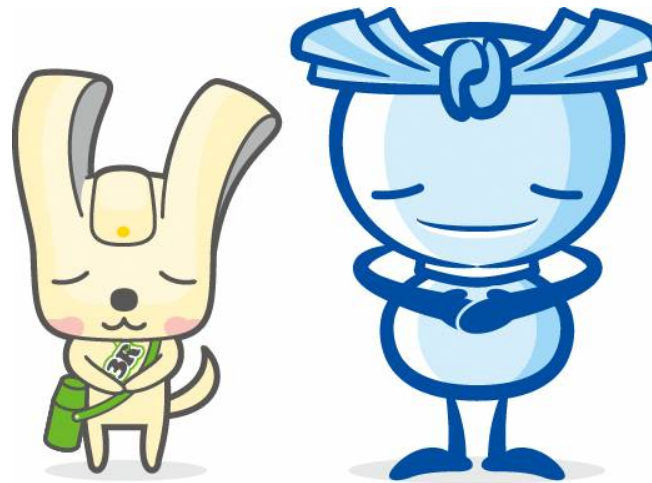
Collection of Small Home Electronics in the City of Yokohama

	FY 2013	FY 2014	FY 2015	FY 2016
Mobile/Smartphones	290 kg	503 kg	546 kg	829 kg
Computer	Not eligible for collection			16,309 kg
Other Small Home Electronics	3,570 kg	9,311 kg	9,408 kg	9,062 kg
Total	3,860 kg	9,814 kg	9,954 kg	26,200 kg

- March 2016: Started installation of collection boxes in large supermarkets
- May 2016: Started collection of computers
- Benefits of Computer Collection
 - (1) Inhibits the effects of onerous bidding caused by the high value of metals contained within the computer
 - (2) Until now, citizens paid a recycling fee for computers, which could only be recycled at the manufacturer, but now it is possible to recycle computers easily at no cost by simply putting them in the collection box (improving services for citizens).
 - (3) After the start of computer collection services, inquiries from citizens increased, further promoting small home electronics recycling among citizens.



Thank you for your attention.



**Inquiries: Policy Coordination Division, Resource and
Waste Recycling Bureau, City of Yokohama**

TEL: +81-45-671-4565

<mailto:sj-wastemanagement@city.yokohama.jp>