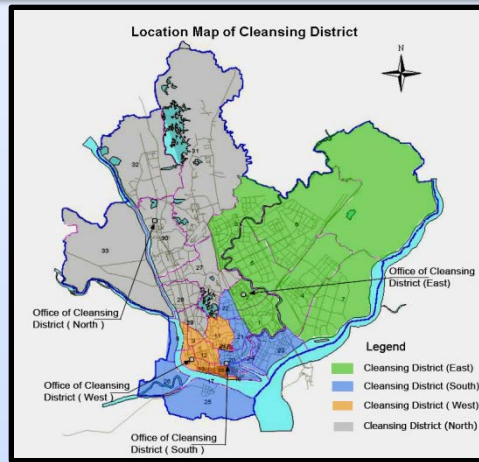


Activities for Promotion of Circular Economy and Expectation for Japanese Enterprises

**Presented By
Mr. Zaw Nyunt
Production Department
Yangon City Development Committee**

Profile of Yangon City

Area



- The administrative boundary of YCDC, in 1985 (133.643 Sq-Miles) (292.426) Square Miles.

Population

- 7.6 million (2018)

Township

- 33 Townships

Generation Rate

- 0.5 Kg / Capita / Day

Household Waste Generated

- 2500 tons per day

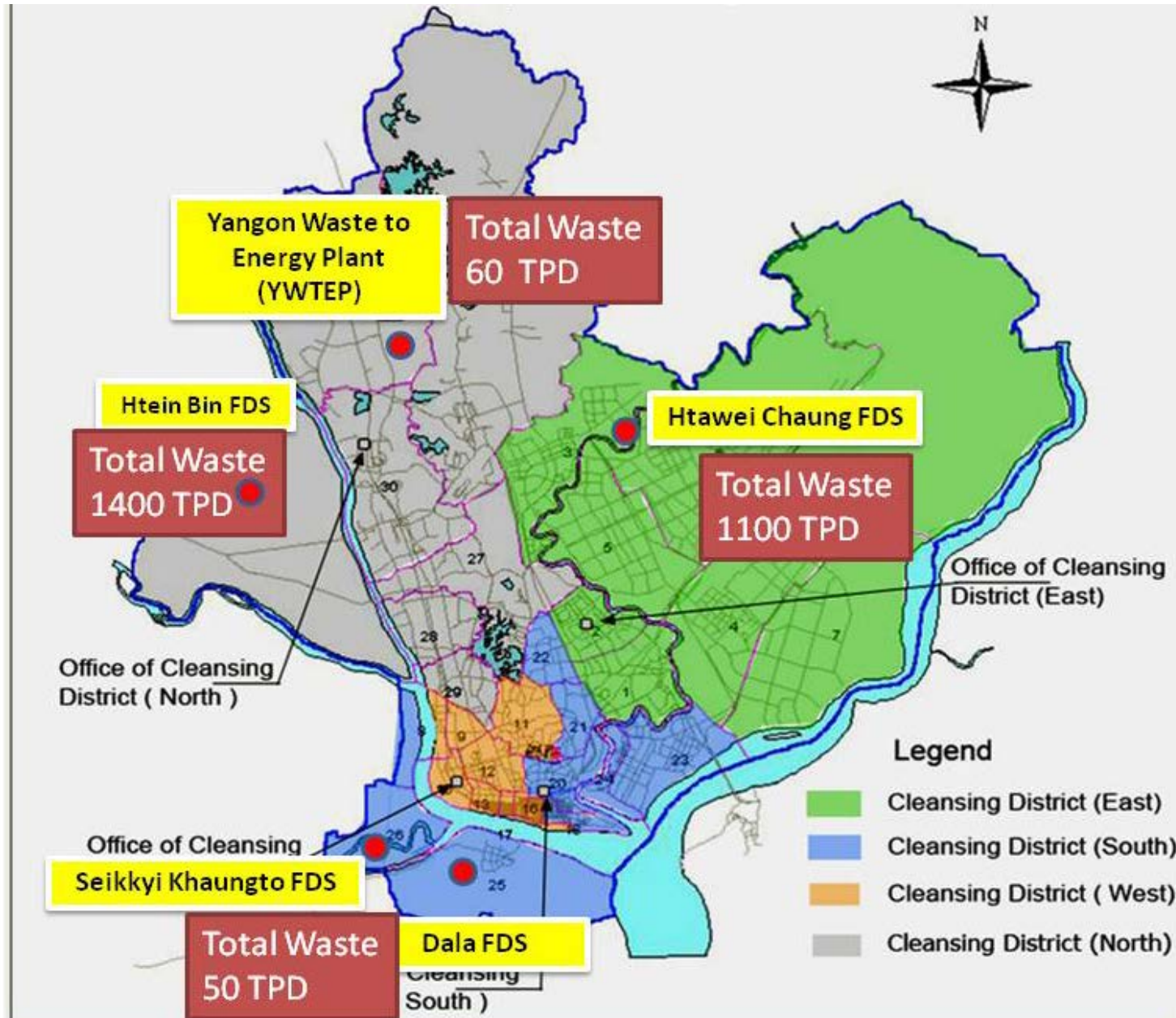
Industrial Waste Generated

- 250 tons per day

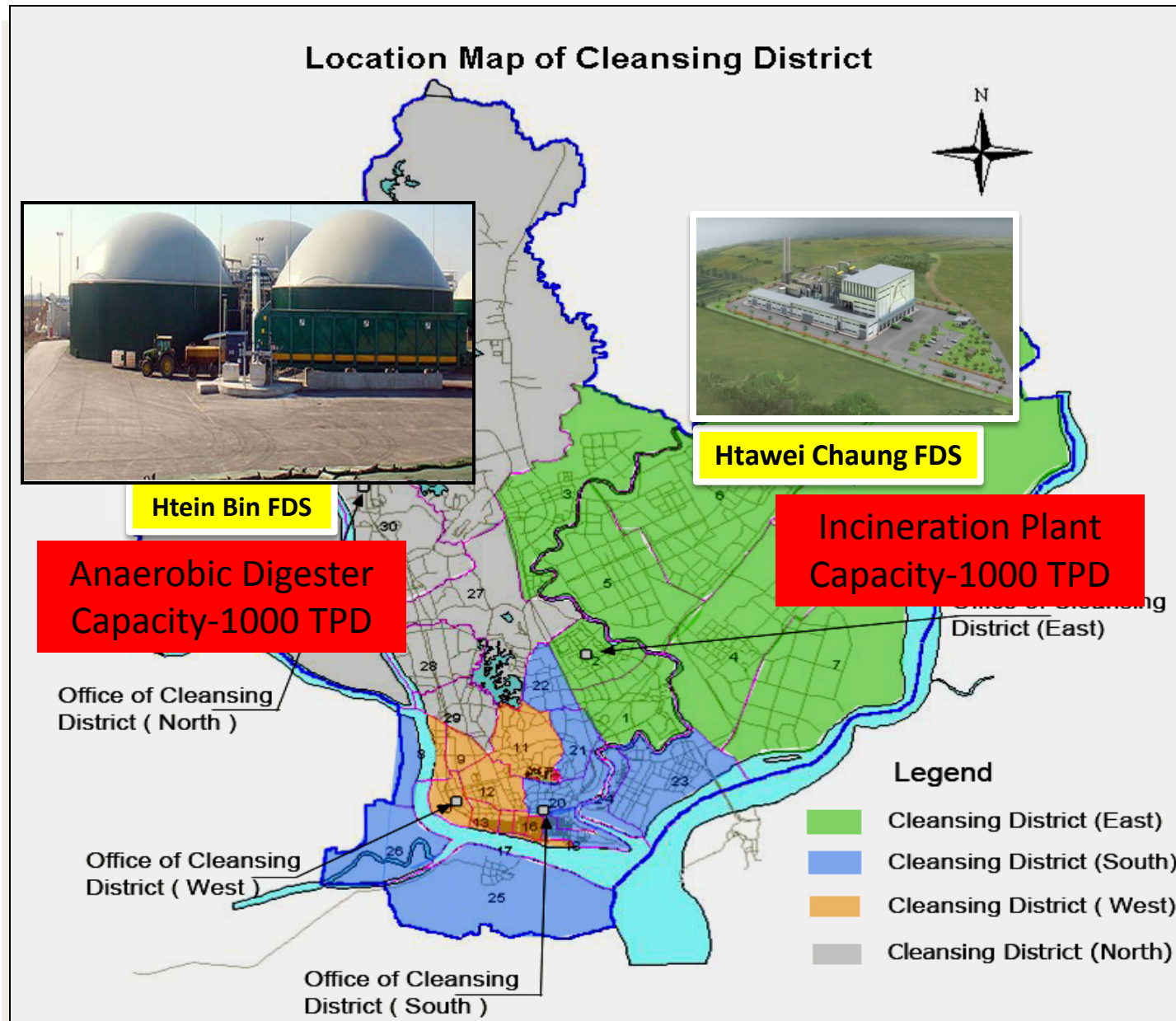
Health Care Waste Generated

- 2.15 tons per day

Location Map of Final Disposal Sites



Implementation Projects(Future)



Main Challenges in Yangon City

Objectives

- ❖ Used Tyres Recycling.
- ❖ Municipal Solid Waste to Refuse Derived Fuel (RDF)

Tire Population of Used tire increasing per annum – 3.2 Mil-Nos



You can see everywhere and roadside of YCDC administrative boundary

We cannot solve illegal dumping of used tire

Refuse Derived Fuel (RDF)

Separation of Wet / Dry Waste including as follows;

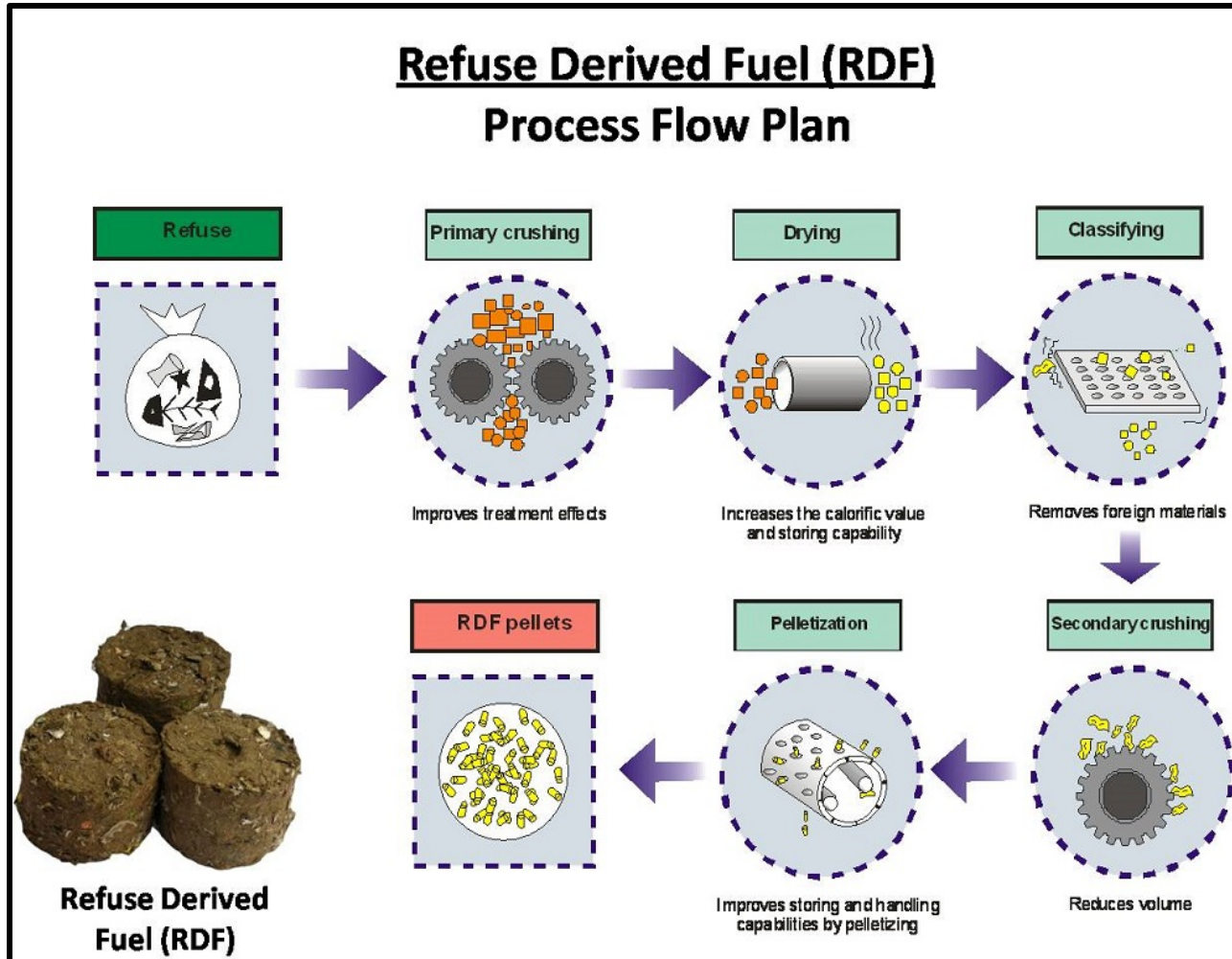
- Bulky Wastes
- Non Combustible Wastes and others



Refuse Derived Fuel (RDF)



Future Fuel by Conversion of Combustible Waste



Tyre Recycle Material

End-usage



Tire debris

Thermal recycle

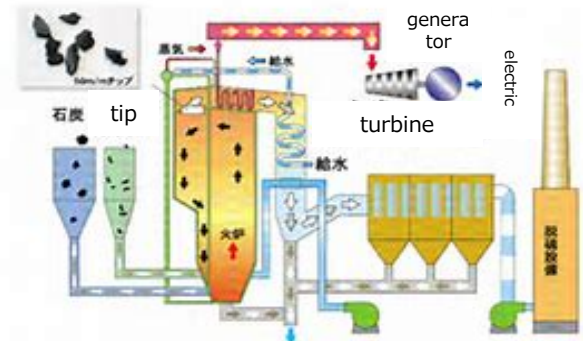


Steam generated by boiler



Shredding chip

Thermal recycle



Electric generated by turbine



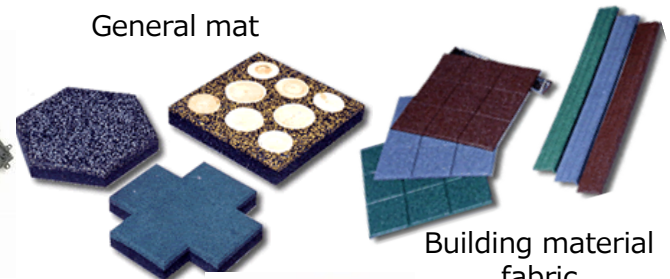
Rubber powder

Material recycle



Artificial grass / turf

General mat



Building material fabric



Used tire

Material recycle



reused tire

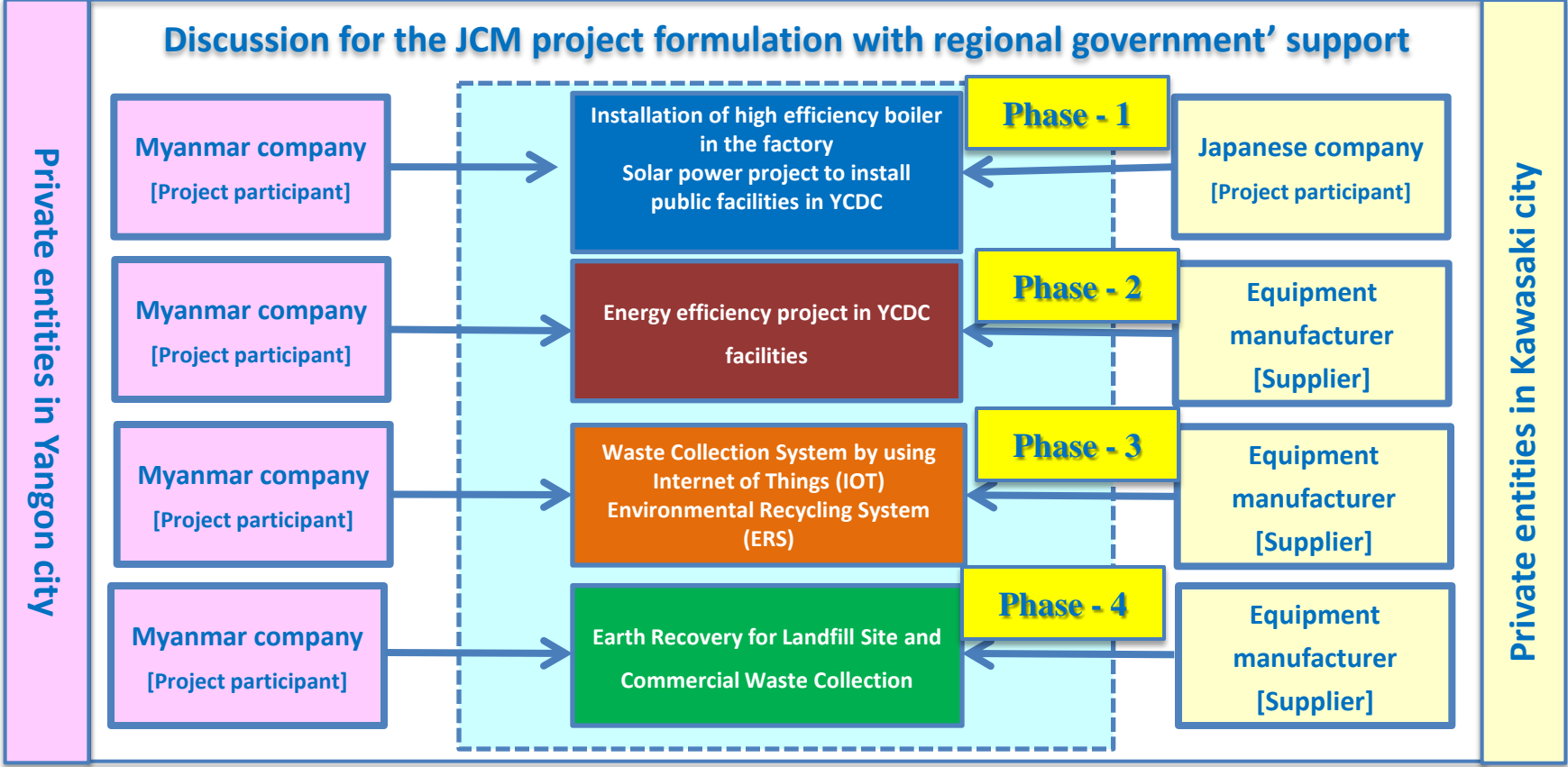


retread tire

Expectation to Japanese Enterprises

- ✓ **Conducting Feasibility Study**
- ✓ **Market Analysis Orientation**
- ✓ **Implementing Project with JCM Scheme**
- ✓ **Creating Low Carbon Society with City area**
- ✓ **Inviting Collaboration Project between Kawasaki
and Yangon**

Overview of project





Thank you for your attention