

PALEMBANG CITY GOVERNMENT



**THE 8th 3R Conference for Asian Local Government
Japan. Yokkaichi City, November 4th 2015**

By

**H. Harnojoyo
Mayor of Palembang**

Banyu Asin
City

Banyu Asin
City



KEC. SUKARAMI

KEC. SAKO

KEC. ALANG-ALANG LEBAR

KEC. SEMATANG BORANG

KEC. KEMUNING

KEC. KALIDONI

KEC. ILIR BARAT I

KEC. ILIR TIMUR I

KEC. ILIR TIMUR II

KEC. BUKIT KECIL

KEC. ILIR BARAT II

KEC. SEB. ULU II

KEC. GANDUS

KEC. SEB. ULU I

KEC. PLAJU

KEC. KERTAPATI

South Sumatra
Province

- City Region : 16 Districts, 107 Village
- Area of The City : 400,61 km²
- Population : 1,708,413 Inhabitants
- Population Growth : 1,42 %
- Economic Growth
- - Oil and Gas Sector : 16,19%
- - Non-Oil Sector : 17,94%
- Development of Business : Industrial, Factory and






VISION

PALEMBANG EMAS 2018

City of Palembang **E**lok(Elegant), **M**adani(Civilized),
Aman(Secure) and **S**ejahtera(Prosperous)

MISSION

1. Creating a Governance Mandate and Authority as Well as Improvement of Public Services.
2. Creating a Secure Palembang City to Invest and Independent Development.
3. Improve the Community Economy by Empowering the Village Community.
4. Encouraging Faith and Devotion of Society and Thus Creating a Religious Society.
5. Enhance the Development of Equitable and Environmentally Sound in Every Sector.
6. Continue Development of Palembang City Elegantas an International Metropolis, Habitual and Prosperous.



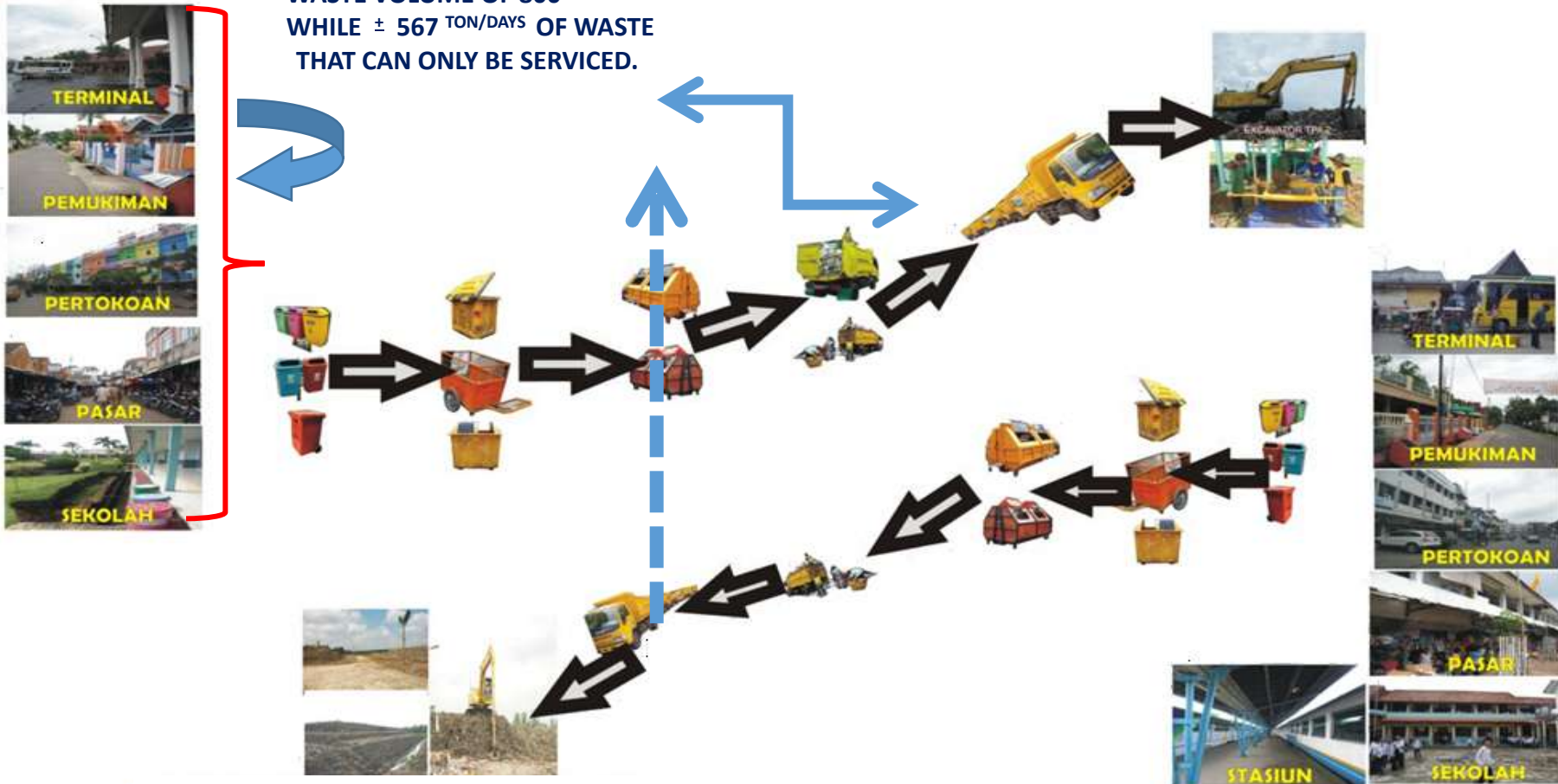
Programs & activities of urban environmental management towards eco palembang city:

1. Urban waste management
2. Water pollution control
3. Air pollution control
4. Soil management.
5. Biodiversity
6. Climate change
7. Social and economic

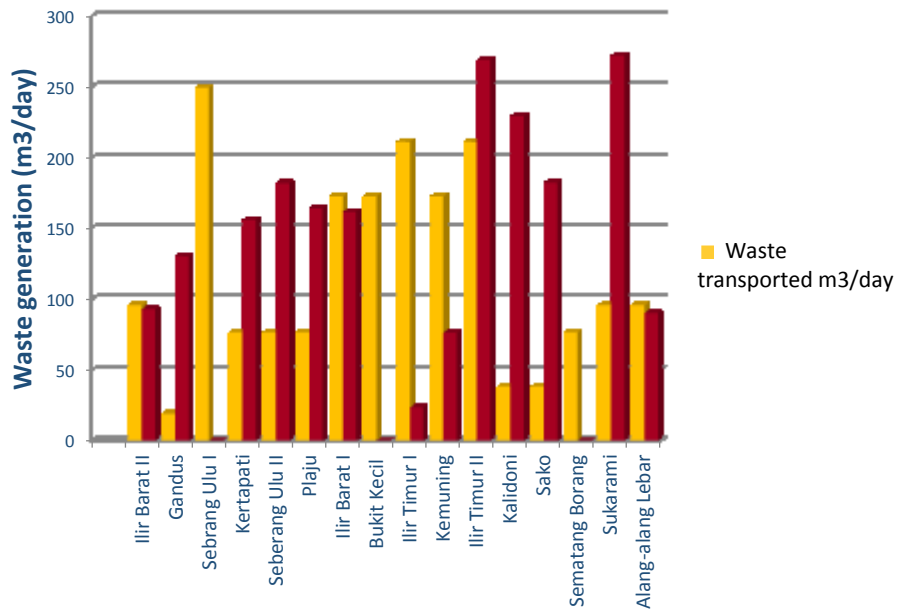
WASTE MANAGEMENT SYSTEM PALEMBANG CITY

SOURCE WASTE GENERATION

WASTE VOLUME OF 800 TON/DAYS
WHILE \pm 567 TON/DAYS OF WASTE
THAT CAN ONLY BE SERVICED.



SOURCE WASTE GENERATION

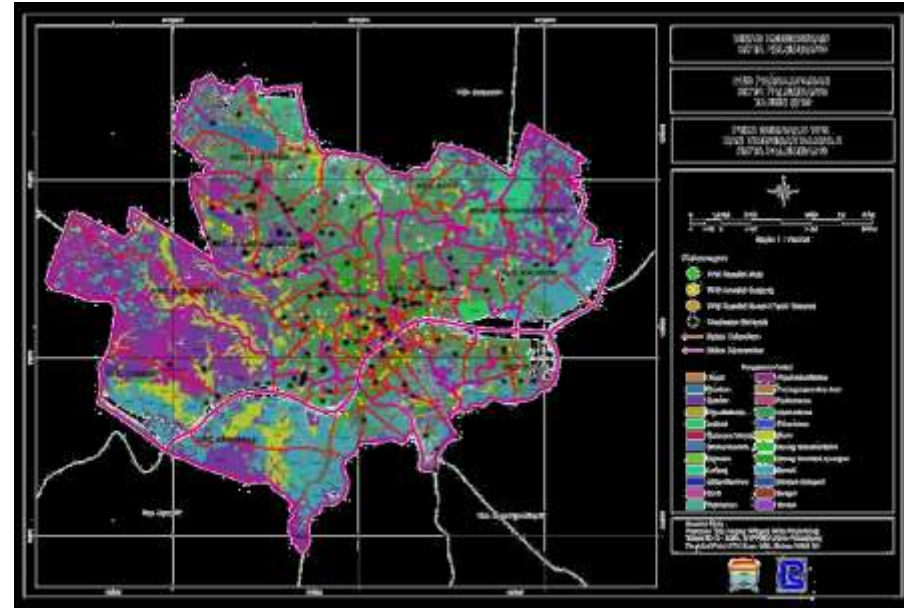


Waste data dumped into SUKAWINATAN LANDFILLS (Kg)

NO	BULAN	TAHUN 2012		TAHUN 2013		TAHUN 2014	
		JUMLAH	Rata - rata	JUMLAH	Rata - rata	JUMLAH	Rata - rata
1	Januari	17,503,890	564,642	16,452,020	530,710	17,650,210	569,362
2	Februari	15,396,780	530,923	16,294,420	581,944	15,794,050	564,073
3	Maret	15,369,680	495,796	17,930,070	578,389	17,359,370	559,980
4	April	18,707,950	623,598	17,927,589	597,586	16,721,460	557,382
5	Mei	17,373,250	560,427	17,993,120	580,423	17,362,320	560,075
6	Juni	15,935,330	531,178	15,527,640	500,892	16,710,720	557,024
7	Juli	14,020,200	452,265	16,067,800	518,316	18,681,080	602,615
8	Agustus	16,929,010	546,097	17,172,990	553,967	17,336,610	559,245
9	September	15,136,480	504,549	16,805,390	560,180	16,675,830	555,861
10	Oktober	16,372,600	528,148	16,472,300	531,365	17,270,970	557,128
11	Nopember	16,778,030	559,268	16,207,740	540,258	17,236,720	574,557
12	Desember	16,111,230	519,717	18,079,849	583,221	18,287,190	589,909
JUMLAH		195,634,430	534,717	202,930,928	554,771	207,086,530	567,268

(Sumber : Bid.Pengelolaan TPA dan limbah, Dinas Kebersihan Kota Palembang)

The amount of distribution TPS area Palembang city



LANDFILLS SUKAWINATAN IS INOVATIF LANDFILLS





THE ROLE OF GOVERNMENT and SOCIETY

- 1. Community Participation Through Mutual Help Clean Up Rivers, Creeks, Drainage And Neighborhoods.*
- 2. The Socialization Of Environmental Hygiene*
- 3. 3R Implementation Of Pilot Project In Cooperation With JICA.*
- 4. The Establishment Of The Waste Bank And Independent TPS.*





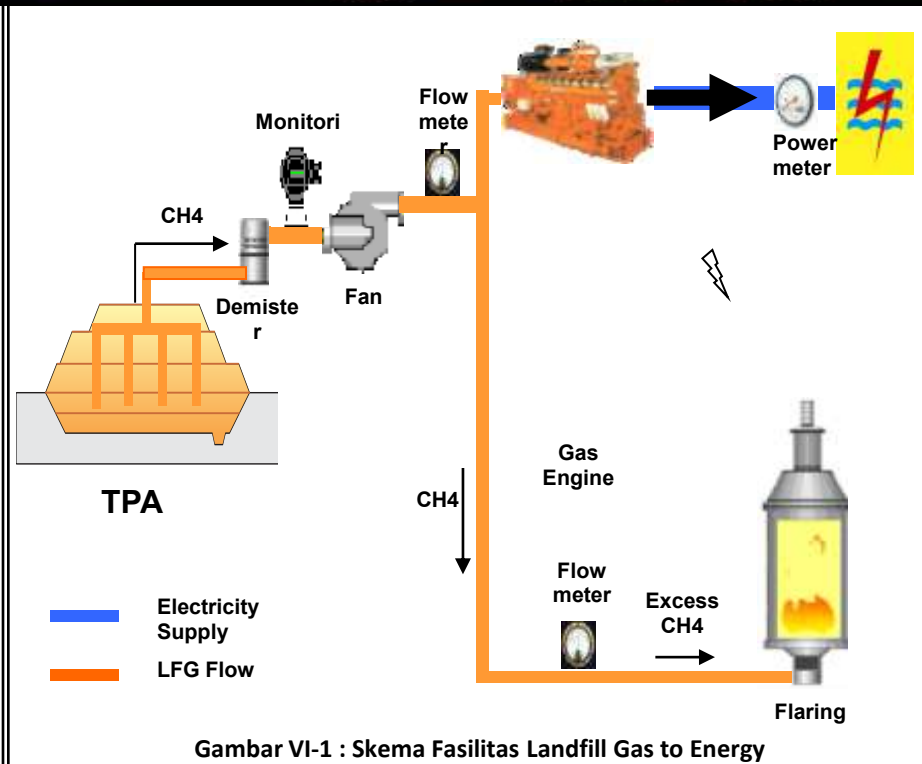
3R pilot project in cooperation with JICA are expected to reduce waste 20 %.

1. JESC Cooperation Program To Zero Waste And Waste To Energy.
2. Visit Yokkaichi City Deputy Mayor Is Expected To Realize The Vision And Mision Of Palembang City With Mutual Cooperation.
3. Yokkaichi City Intends To Make The City Of Palembang Became Sister City.





Energy Utilization Project of Waste Into Electrical Energy Assistance From The Ministry of Energy EBTKE State Budget 2014 (Pltsa)



Electricity Production Capacity of 500 kva



Palembang City Got a Great Honor When Designated Host The Event The 18th Asian Games 2018

There are Several Development Planning In Order To Preparation for The Grand Event.





TRANSPORTATION DEVELOPMENT PLAN

1. *Construction of the bridge Musi IV*
2. *The construction Fly Over intersection of the airport.*
3. *Construction Fly Over intersection Keramasan.*
4. *The construction of the LTR from the Airport to Jakabaring.*





CLEANLINESS DEVELOPMENT PLAN

1. *Landfill rejuvenation heavy equipment.*
2. *Provision of sanitation facilities and infrastructure.*
3. *The use of more modern hygiene.*
4. *The addition of waste transport vehicles.*
5. *Improvement of human resources solid waste field*





LANDSCAPING, STREET LIGHTS AND PUBLIC DEVELOPMENT PLAN

- 1. Revitalizing parks and monuments.*
- 2. Revitalizing ponds.*
- 3. Installation of lights in the garden parks, intersections, main streets and walkways.*
- 4. Manufacturing of fountains.*





LOCAL WATER COMPANY DEVELOPMENT PLAN

1. *Construction installation of water filtration in ogan river with a capacity of 500 liters/second.*
2. *An increase the installation of water filtration that already on the ogan river.*
3. *Construction installation of water filtration gandus with a capacity of 1000 Liters/second.*
4. *The construction of dams on tanjung barangan 100 hactares for preparation of raw water and water conservation. (DED on schedule).*



A nighttime photograph of the Hotel Seri Malaysia Ipoh. The building is brightly lit with warm yellow lights. In the foreground, several tall palm trees are wrapped in vibrant, multi-colored LED lights (red, green, blue, and purple). The sky is a deep blue. The text "THANK YOU" is overlaid in the center in white, and "ENVIRONMENTALLY SUSTAINABLE CITY" is at the bottom in red.

THANK YOU

ENVIRONMENTALLY SUSTAINABLE CITY